



OLTON CHESS CLUB



NEWSLETTER 108 APR 2015

LEAMINGTON LEAGUE WINNERS

In a season with few highlights, the Leamington League 1A side completed a great title win with 4 matches to spare. The team continued to be unbeaten until three matches from the end, when they lost to Kenilworth. The open cup team lost earlier in the season to Banbury. The 1B team started out reasonably well, but have since lost a number of matches with close scores. With 4 matches drawn and only 2 wins, the team are in danger of relegation. They did well to draw with Solihull, Daventry and Kenilworth on two occasions. However, wins against Shirley and Stratford seem a distant memory. The C team in Division 2 have 4 wins and 1 draw and are currently in 6th place. They have faced some strong teams

in the League this season. Points were scored home and away against the Shirley C and Kenilworth sides. The 4D team was entered this season and is currently top of the table, with 21 points from 14 matches. With no less than 5 drawn matches so far, the team has done well both at home and on the road. They have beaten Kenilworth D both home and away. The club entered a team in the Leamington League Jamboree tournament at the start of the season. Teams of 2 with a maximum overall grade competed in a series of quick games. Phil Holt had a perfect score of 4/4 and Paul Kelly scored 3/4 to win the title for Olton. Phil took the individual award and Paul shared the Minor section individual.

LEAMINGTON JAMBOREE

Here are some of Phil's games from the Jamboree.

Round 2

<u>WHITE</u>	<u>BLACK</u>
P.Holt	B.Graff
1. e4	e6
2. d4	d5
3. Nc3	dxe4
4. Nxe4	Bd7
5. Nf3	Bc6
6. Bd3	Nd7
7. O-O	Ngf6
8. Ng3	Bxf3
9. Qxf3	c6
10. c3	Be7
11. Be3	O-O
12. Nh5	Nxh5
13. Qxh5	Nf6
14. Qh3	Qd5
15. Rae1	Rad8
16. Qh4	Rfe8
17. Bg5	h6
18. Bxh6	gxh6
19. Re5	Qd7
20. Qxh6	

28. Kh4	Bd7
29. Qe2	Rh1
30. h3	Bxh3
31. gxh3	Rg1
32. f4	Bf6#

0-1

We now have a game from the recent Olton 1A match against Solihull, which Phil Holt described in his match report as 'Ultra Un-modern'.

<u>WHITE</u>	<u>BLACK</u>
M.Cundy	O.Smith

1. e4	e5
2. f4	exf4
3. Nf3	g5
4. Nc3 {The Quaade variation which does date back to the 19th Century.}	
4.....	g4
5. Ne5	Qh4+
6. g3	fxg3
7. Qxg4 Qxg4 (7...g2+ {Black can win the Rook, however after} 8.Qxh4 gxh1=Q 9.Qh5 {White has a close to winning advantage.})	
8. Nxc4	d5
9. Ne5 {The 21st century suggestion of GM John Shaw. This is now modern chess.}	
9.....	Bd6
10. d4	f6
11. Nd3	Nc6
12. Be3	gxh2 (12...dxe4 {would have been an improvement, but White would still be slightly better.})
13. Nxd5	Bg4
14. Bg2	O-O-O
15. c3 {The only move to maintain White's advantage. Black is currently a pawn up, but the kingside pawns are weak.}	
15.....	h5
16. N5f4 (16.Bf4 Nce7 17.Ne3 Ng6 18.Bxh2 {with a bigger advantage than in the game according to the computer.})	
16.....	Nge7
17. Rxh2	Ng6
18. Nxc6	Bxh2
19. Nxh8	Rxh8
20. Bf4 (20.Kd2 {is the	

1-0

Round 3

<u>WHITE</u>	<u>BLACK</u>
D.Rowan	P.Holt
1. d4	Nf6
2. Bg5	Ne4
3. Bf4	c5
4. f3	Nf6
5. d5	g6
6. e4	d6
7. Bb5+	Bd7
8. Bd3	b5
9. c4	bxg4
10. Bxc4	Bg7
11. Nc3	O-O
12. Nge2	Qb6
13. O-O	Na6
14. Qd2	Rab8
15. Rab1	Nc7
16. Bh6	Nb5
17. Be3	Ne8
18. b4	Na3
19. bxc5	Nxb1
20. Rxb1	Qxb1+
21. Nxb1	Rxb1+
22. Kf2	dxg5
23. Bxc5	Nd6
24. Bxd6	exd6
25. Bb3	Bb5
26. Nc3	Rf1+
27. Kg3	Be5+

RECENT RESULTS

Division 1

Olton 3-3 South B'ham B West Bromwich 2-4 Olton
Olton 3½-2½ Lichfield Sutton C. 1½-4½ Olton

Division 2

Olton 2½-3½ Warley Q. A Olton 2½-3½ Sutton C.
South B'ham A 3½-2½ Olton Olton 3½-2½ South B'ham B

Division 3

Olton 3½-2½ Mercia Birmingham 3-3 Olton
Stourbridge 2½-3½ Olton Olton 5-1 Westminster

Division 4

Solihull A 3-3 Olton Olton 1½-4½ Solihull B
Boldmere 4-2 Olton Olton 6-Def University

Division 6

Kynoch 2-2 Olton Olton 1½-2½ Lichfield
Olton 2-2 Westminster A South B'ham B 2-2 Olton

Olton 1A

Solihull ½-3½ Olton Olton 3-1 Stratford
Olton 3-1 Shirley Olton 1-3 Kenilworth

Olton 1B

Olton 1½-2½ Banbury A Kenilworth 2-2 Olton
Olton 1½-2½ Daventry Banbury B 3½-½ Olton

Olton 2C

Shirley B 3½-½ Olton Olton 3-1 Kenilworth
Solihull B 3-1 Olton Olton 3½-½ Shirley C

Olton 4D

Olton 1½-½ Banbury Olton 1½-1½ Solihull F
Rugby ½-2½ Olton Kenilworth D 1-2 Olton

computer's preference with a larger advantage.))

- 20..... **Bxf4**
 21. **Nxf4** **f5** {Not best, but it does force white to find the correct next move. 21...Nd8
 22.Kd2 Rh6 23.Rg1 Ne6 {would have been an improvement. White is better, but Black would retain hopes of a draw.})
 22. **e5** {Now White has a close to winning advantage.}
 22..... **Re8**
 23. **Kf2** **Na5**
 24. **Rh1** **c5** {Disliked by the computer, but by now Black's only chance is to give White opportunities to make a mistake.}
 25. **Nxh5** **cxd4**
 26. **cxd4** **Nc6**
 27. **Bxc6** **bxc6**
 28. **Nf6** {White is a pawn up, Black has a miserable bishop and weak pawns. The ending is not played completely accurately, but white maintains a clear advantage throughout.}
 28..... **Rf8**
 29. **Ke3** **a5**
 30. **b3** **Rf7**
 31. **Rg1** **a4**
 32. **bxa4** **Ra7**
 33. **Nxg4** **fxg4**
 34. **Rxg4** **Rxa4**
 35. **Rg2** **Kd7**
 36. **Rc2** **Ra3+**
 37. **Ke4** **Ra8**
 38. **Kd3** **Ra3+**
 39. **Kc4** **Ra4+**
 40. **Kc3** **Ke6**
 41. **Rd2** **Kd5**
 42. **Kb3** **Ra6** {Black could not take the 'd' pawn as then the 'e' pawn would queen.}
 43. **a4** **c5**
 44. **dxc5+** {The only winning move, but not a hard one to find.}
 44..... **Kxc5** (44... Kxe5 {would not help. If the Black king could get in front of the white pawns Black should draw, but with the king cut of it is an easy win for white.})
 45. **Re2** **Rb6+**
 46. **Kc3** **Re6**
 47. **a5** {The 'a' pawn must be far enough advanced to queen if Black chooses to win the 'e' pawn with Kd5.}
 47..... **Kb5**

48. **Kd4** **Kxa5**
 49. **Kd5** **Re8**
 50. **Rb2** {Cutting the king of with the rook is one winning plan. Advancing the pawn of king would work just as well.}
 50..... **Rd8+**
 51. **Ke6** **Rd1**
 52. **Ke7** **Re1**
 53. **e6** **Re3**
 54. **Kd7** **Rd3+**
 55. **Ke8** **Re3**
 56. **e7** **Re1**
 57. **Rb7** (57.Rd2 {with Kd7 to follow would have been quicker.})
 57..... **Ka6**
 58. **Rd7** **Rb1**
 59. **Rd2** **Kb7**
 60. **Kd7**

1-0

GAME FINISH

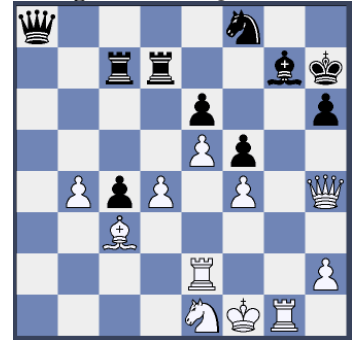
In the last newsletter, we saw the finish of the game between Richard Reynolds and Tom Darling. The game continued 39.Rxf7 Nxf7; 40 Rxf7 Rxf7; 41. Qe8+ Kg7; 42.Qxf7+ Kh6; 43.Qf8+ Kh5;44.Be2+ Kg5; 45.Qf4 Mate.

BIRMINGHAM LEAGUE NEWS

Division 1 have finished with 12 points from 12 matches, winning 4 and drawing 4. After losing a number of matches by close margins, some points at the end of the season helped to secure their place in the division. They had a good run in the Terrill trophy, eventually losing to Stourbridge III. Division 2 also struggled mid-season, scoring 8 points and avoiding relegation. A win against South Birmingham B at the end ensured safety, with Trevor Holt not having to prove a tricky ending was won. The team again went out of the cup at the hands of South Birmingham 1A. Division 3 finished 4th with 15 points from 11 matches, a good performance overall. Division 4 scored 11 points in 11 matches, finishing 8th. They lost to University IV in Townshend round 2. Division 6 finished 7th with 9 points from 11 matches. They

were knocked out of the Barrington Trophy by University VI. Three teams were entered in the Team lightning Tournament. Olton A won Section A from South Birmingham A, thanks good play by the team and a point gained from the latter by Olton B. The team finished half a point ahead on 1½. Olton B finished third in section A with 8½ points. Olton C were last in section B. Now, here is a game from the Division 2 match against Warley Quinborne A.

39. **Bc3** **Qa8+**
 40. **R1g2** **Nf8**
 41. **R6g3** **Kh7**
 42. **Kg1** **Qe4**
 43. **Kf1** **Red7**
 44. **Re2** **Qh1+**
 45. **Rg1** **Qa8**



The adjourned position. Black thought he had been lucky to get this far.

- | WHITE | BLACK |
|---|----------------------------|
| Rich Reynolds | A.Southall |
| 1. e4 | e6 |
| 2. d4 | d5 |
| 3. Nd2 | Nf6 |
| 4. e5 | Nfd7 |
| 5. Bd3 | c5 |
| 6. c3 | Nc6 |
| 7. Ne2 | cxd4 |
| 8. cxd4 | Be7 |
| 9. O-O | Qb6 |
| 10. Nf3 | f5 |
| 11. b3 | O-O |
| 12. Be3 | Re8 |
| 13. Nc3 | Nf8 |
| 14. Na4 | Qd8 |
| 15. a3 | h6 (or b6; |
| | <i>16.Qe2 Bb7; 17. b4)</i> |
| 16. b4 | Nb8 |
| 17. Nd2 | b6 |
| 18. f4 | Bd7 |
| 19. Nc3 | Nh7 |
| 20. g4 | g6 |
| 21. gxf5 | gxf5 |
| 22. Qh5 | Bf8 |
| 23. Kh1 | Re7 |
| 24. Rg1+ | Kh8 |
| 25. Nb5 | Be8 |
| 26. Qh4 | Bxb5 (Nc6; |
| | <i>27. Nd6 a5; 28.b5)</i> |
| 27. Bxb5 | a6 |
| 28. Be2 (<i>Rg6! Qc7 {not axb5;</i> | |
| <i>29. Rag1 Bg7; 30. Rxg7};</i> | |
| <i>29.Be2 Rg7)</i> | |
| 28. | Raa7 |
| 29. Rg6 | Qc8 |
| 30. Rag1 | Bg7 |
| 31. Nf3 | Rac7 |
| 32. Bd2 | Qf8 |
| 33. Bd3 | b5 |
| 34. Ne1 | Nd7 |
| 35. a4 | Nb6 |
| 36. axb5 | axb5 |
| 7. Bxb5 | Nc4 |
| 38. Bxc4 | dxc4 |

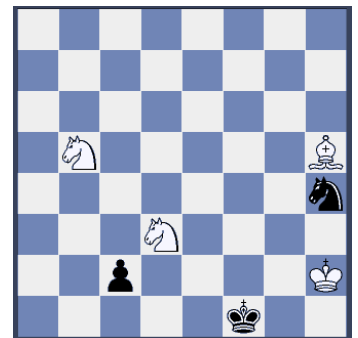
46. **Qg3** **Ra7**
 47. **Nc2** **Ra2**
 48. **Rgg2** **Qe8**
 49. **Rd2** (*d5; exd5; 50. e6 Nxe6; 51.Rxe6 Qxe6 looked dodgy. Eg 52. Qxg7+ Rxg7; 53. Rxg7 Kh8; 54. Rg6+*)
 49. **Qf7**
 50. **Ne3** **Rxd2**
 51. **Rxd2** **Rc7**
 52. **d5** **exd5**
 53. **Rxd5** **Ne6**
 54. **Rd2** **Rc8**
 55. **Nc2** **Bf8**
 56. **Qf3** **Rc7**
 57. **Ne3** **Rc8**
 58. **Nd5** **Be7**
 59. **Nb6** **Rc7**
 60. **Nd5**

With time running short, the game was agreed a draw.

1/2-1/2

PHIL HOLT'S PUZZLE

Here is another puzzle from Phil Holt. It is White to play and mate in 5 moves. Solution next time.



Richard Reynolds